

North Pond Restoration Projects

Sub-Project:

Viewing Area 1 - adjacent to Corehampton Road Lay-by

Planting Plan

Contact Information:

Tel: 01489 894137

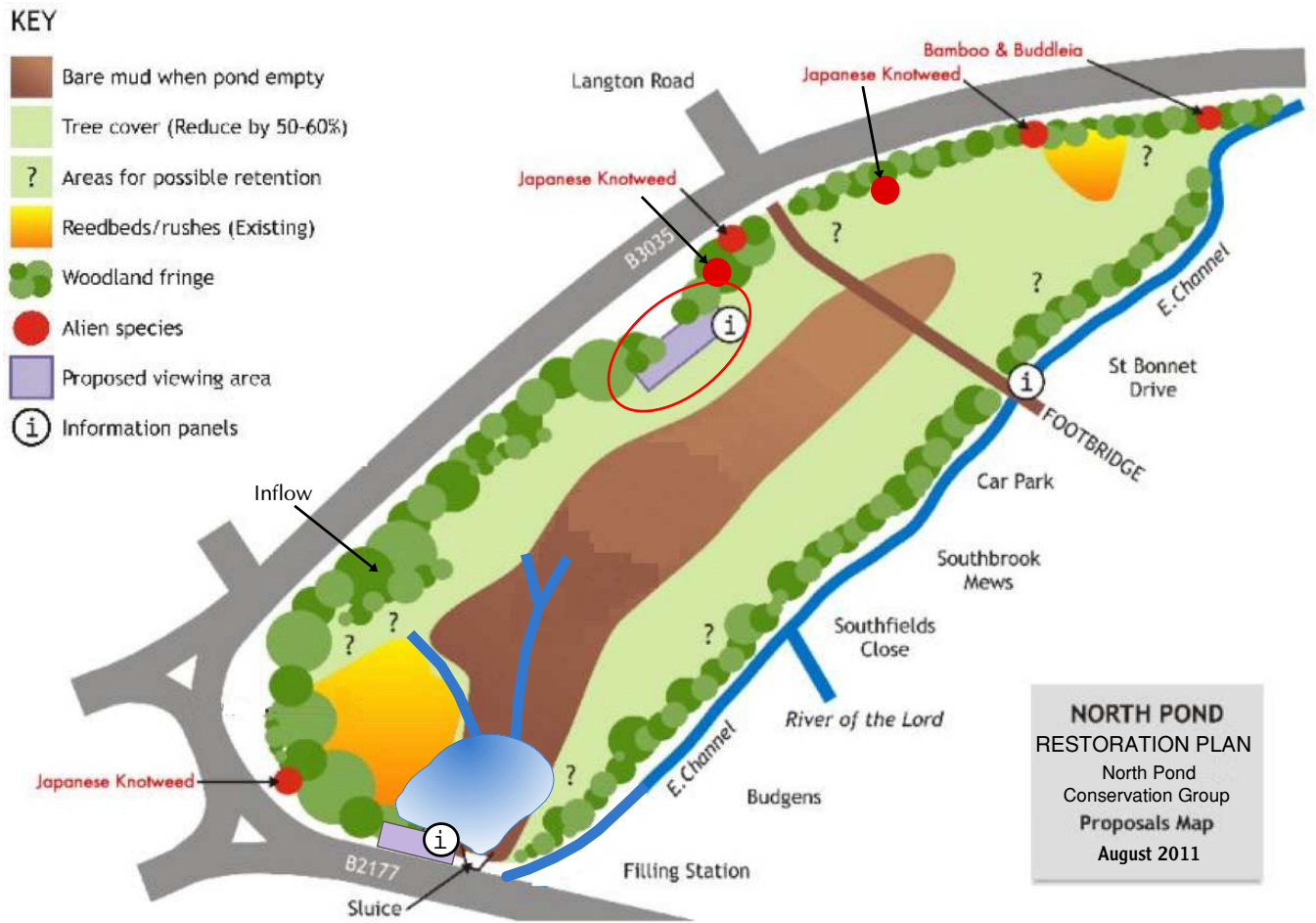
Mob: 07711 058927

email: barryjerome@bwpfc.org.uk

Dr. Barry R. Jerome
Bishops Waltham North Pond
Conservation Group

31st August 2013

Site Location





Planting Plan

The purpose of the planting plan is to have a balance between native planting, mown grass and colourful bulbs in the Spring.

Bulbs

The area has already been planted with garden varieties of daffodils which provide a colourful spectacle in the Spring. The aim of the planting for the future is to introduce more native species such as native English bluebells and snowdrops, with where possible the smaller native daffodils, or a cultivated variety of small similar appearance. Crocus will also be planted to provide early colour.

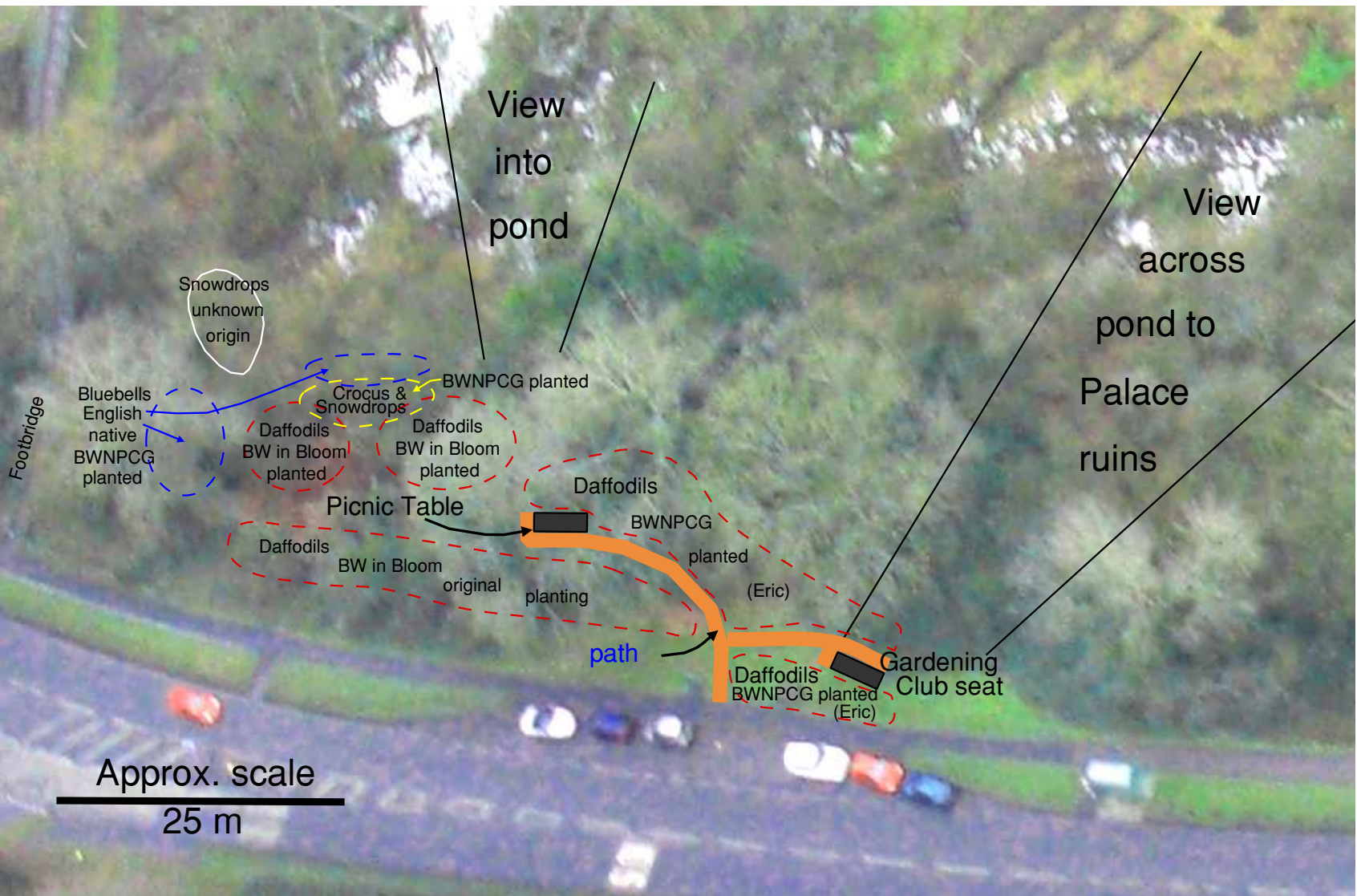
Mown grass

At the moment the grass is mown infrequently and the whole area is mown. This results in a general untidy appearance, and also results in no wildflowers from early summer onwards. The areas for mowing will be clearly defined and mown more frequently by BWNPCG volunteers during the summer.

Wild Flowers

Areas will be established for wild flowers which are not mown. Native wild flowers will be introduced to get a variety of species which will grow under the conditions experienced in the lay-by area. This will provide colour for users of the area and nectar for the bees and other insects. At least twenty two species of wild flower already grow in the lay-by area, but many are cut down before flowering. These species will be used as the starting set for the wild flower areas.

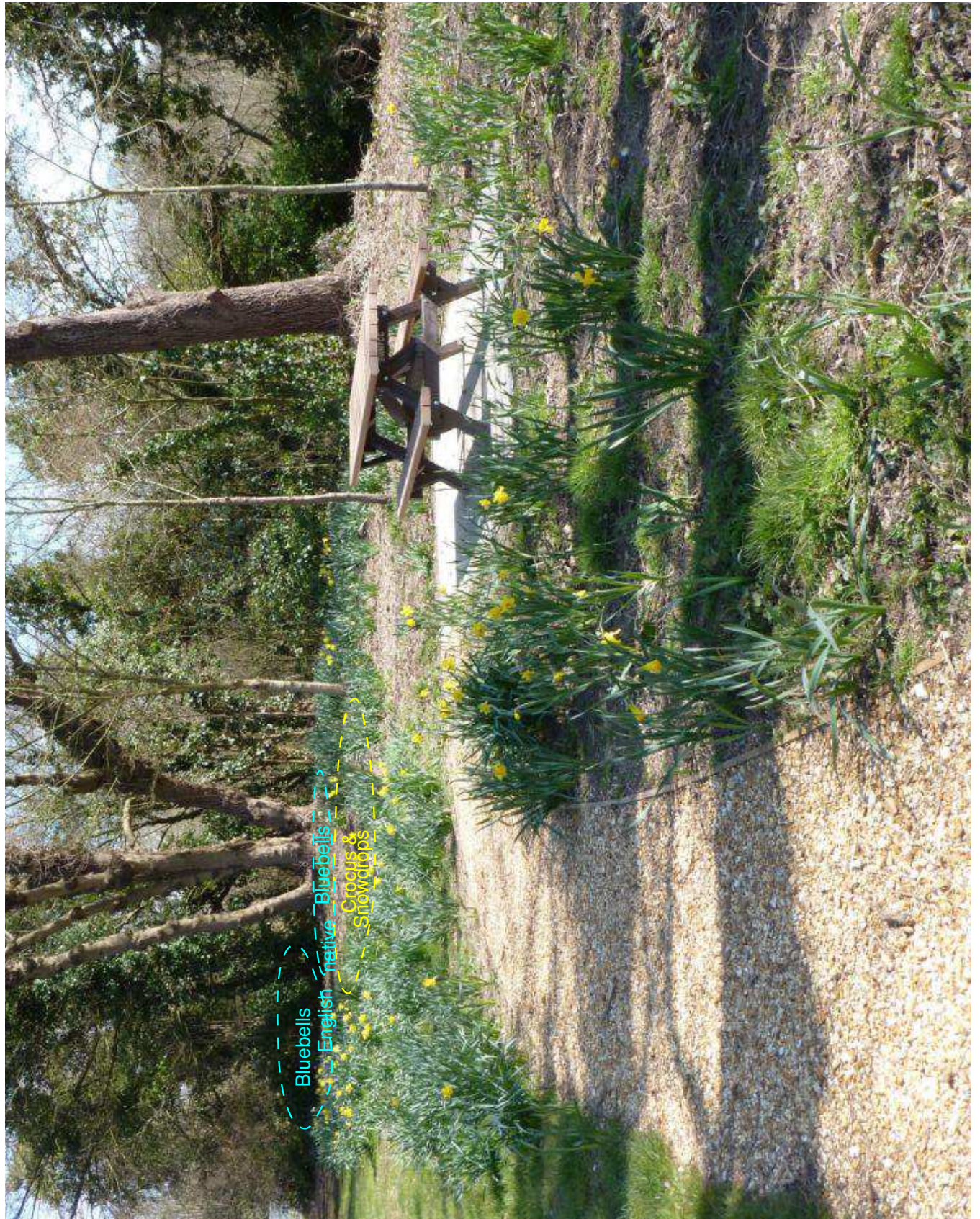
Planting Guide - Bulbs



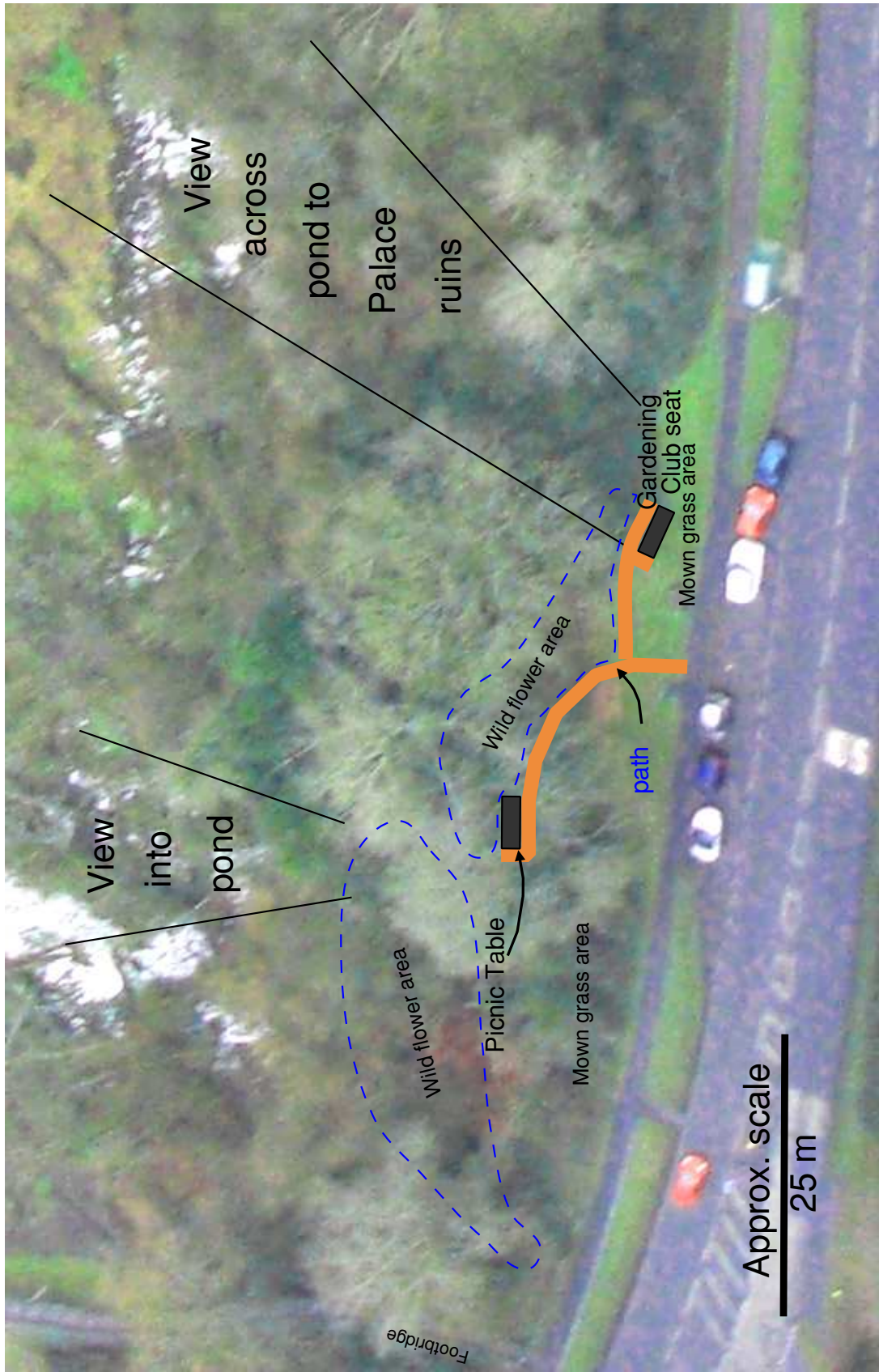
5

Spring 2013 - Existing daffodil planting (BW in Bloom & BWNPCG) and areas for bluebell & crocus

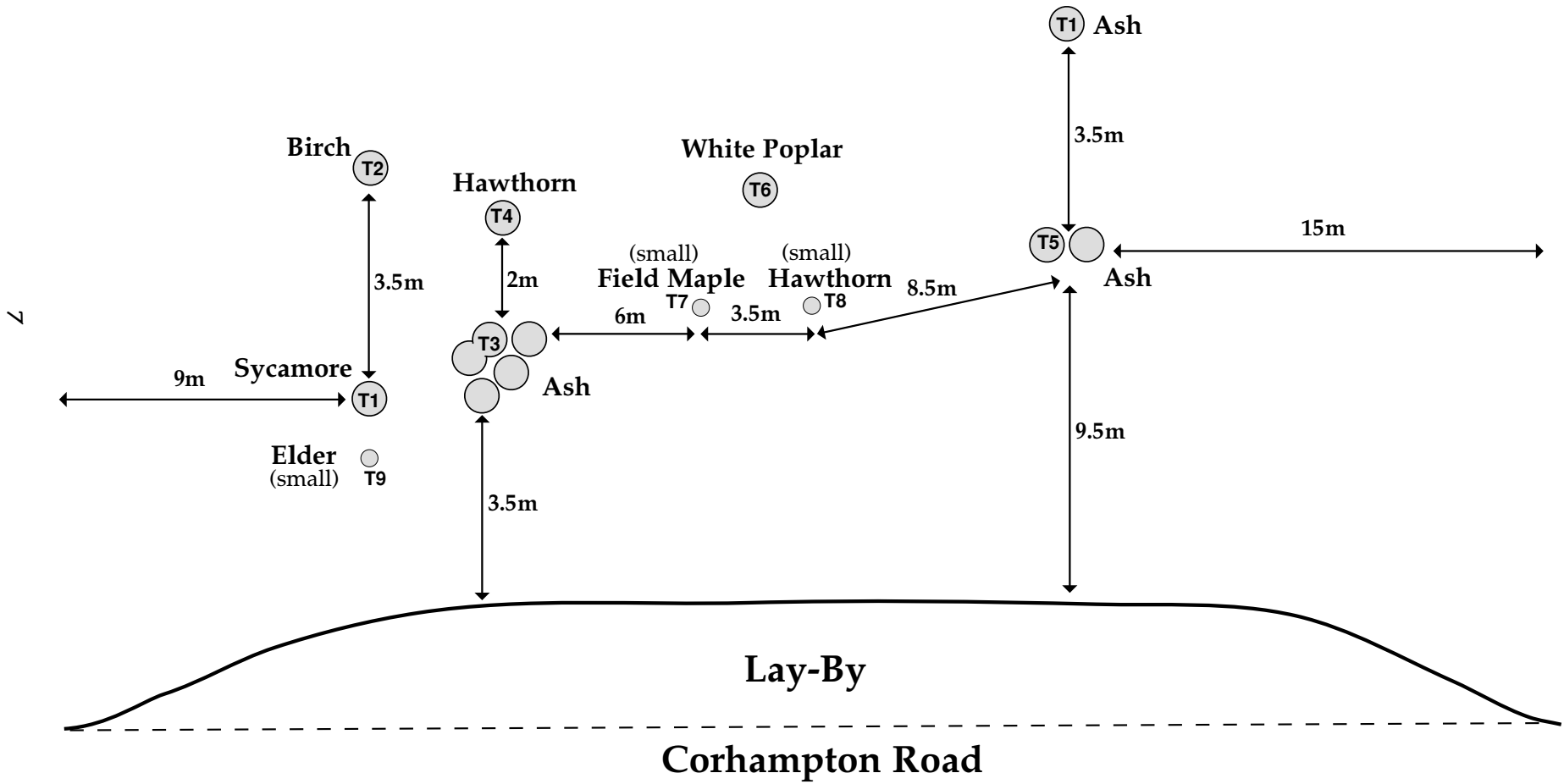




Planting Plan - Wild Flowers



Sketch of Trees on Lay-By Viewing Area





Key to Lay-by trees

Tree work approved under the North Pond TPO order. Work was carried out by Amey during the Community Day and maintenance will be continued by the BWNPCG.

T1 Sycamore

- Crown lift to 3m, cut base of ivy.

T2 Birch

- Cut the four branches which are leaning towards the lay-by to reduce the probability that they will break and fall. This will also give the tree a more upright habit. Cut base of ivy.

T3 Ash

This tree has multiple (five) trunks and may have been previously coppiced. Crownlift all trunks to 3m and cut base of ivy.

T4 Hawthorn

- Tree has fallen. Cut down to ground level.

T5 Ash

- This Ash has two trunks. There are broken and fallen branches, possibly from wind damage. Cut back the damaged/fallen branches to the trunks. Crown lift to 3m and cut base of ivy.

T6 White Poplar

- No action required

T7 Field Maple

- A small tree, no action required

T8 Hawthorn

- A small tree, no action required

T9 Elder

- A small tree which has grown forwards towards the lay-by. Cut back to ground level to open up the ground area.